

**Sutton Churches
Tennis Club**
www.ClubTennis.co.uk

Membership

We had a fantastic 60 new members last season. This year we would like to do even better so we are making a special offer to **new members**:-

2 Months Trial Membership for £30 – includes 9 week coaching course with Mihael.

So if you know anybody who might like to join please bring them along to

Open Day

on Saturday 28th April where they can meet with other members and play absolutely free if they wish. You can also help by taking posters from the Clubhouse and putting them up in local public places such as libraries, churches, schools and sports shops.



Remember! Use your SCTC membership card to gain discounts in these sports shops:-

- * Cheam Sports: 020 8643 8811.
- * Morden Sports: 020 8540 8976.
- * Cladish & Co., Wallington: 020 8647 1013.
- * Sportsworld, Nth Cheam: 020 8337 2447.
- * Banstead Sports & Golf: 01737 373 133.
- * Astoria Sports, Wallington: 020 8647 9010.

Issue 4

April 2001

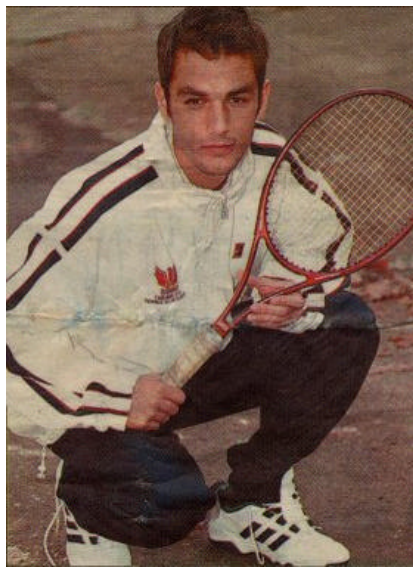
Tennis Club News

Juniors – New Coaching Time

This season the Juniors will be taken by our new coach, Mihael Vucicevic. Sessions will be held on **Tuesday afternoons** from 4pm – 6pm. Please call Richard on (020) 8274 0630 or email info@ClubTennis.co.uk for more information

Meet Mihael, Our New Coach!

This is Mihael Vucicevic, our new LTA coach. Mihael lives in Sutton and



will be taking Juniors on Tuesday afternoons and Adult Beginners on Tuesday evenings.

An article written for The Sutton Guardian in November 1997 described Mihael as "A teen tennis sensation who fled the war in Bosnia and settled in Sutton." At the age of 17 Mihael was Britain's number four junior. As a Cheam High sixth former he narrowly lost in the semi-finals of the Daily Telegraph Grand

Prix in Portugal. He has been playing tennis since the age of seven and his father is also a tennis coach.

If you are interested in private or group coaching, please contact him on 020 8642 9746 or 07903 949 778. Coaching currently costs £15.00 per hour.

Coaching Priorities Please remember that coaching takes priority on the hard courts on Tuesday afternoons and evenings and any other play should not interfere with this.

Doin' up the House...

Yes, this season we are refurbishing the Clubhouse!

Plans so far include a carpeted area with comfy seating, heating, new kitchen units, cooker, microwave, new flooring, new tables, chairs and storage, improved lighting, new curtains and blinds.

If you have any suggestions for improvements you would like to see, please let us know.

You may also be able to recommend suppliers and installers. But most of all we would be grateful for your time if you can help in any way with fittings or repairs. Please speak to



Carolyn Graham with your ideas (020 86423584).

Sutton Churches Tennis Club
www.ClubTennis.co.uk

97 – 101 Gander Green Lane,
Sutton,
Surrey,
SM1 2ES

☎ 01737 357 018

☎ 020 8642 8672

✉ info@ClubTennis.co.uk

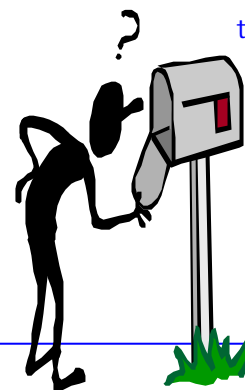
We're on the Web!
www.ClubTennis.co.uk



Wimbledon Tickets

This year we have an allocation of 9 pairs of tickets for Wimbledon. If you are interested in buying them then you will

need to enter the draw. Please look on the Club-house notice board. You must be a paid up member to enter.



On Email?

If so, drop us a line at info@ClubTennis.co.uk

to add yourself to the club mailing list. Keep yourself up-to-date with all the latest club news!

Dates for Your Diary

Working Party – Saturday 28th April, from 9am

We will be preparing the grounds for Open Day. This includes gardening, mending, cleaning and court brushing and rolling.

We need as many helpers as possible so please lend a hand. Bring any tools you may have.



Open Day – Saturday 28th April, from 2pm

Please bring along any friends or family who would like to play tennis – its free. Contributions towards afternoon tea will also be appreciated.

Charity Curry Eve-

ning – Saturday 5th May

Wallington Public Hall, Stafford Road. The Mayor of Sutton is organising a curry evening in aid of the Institute of Cancer Research – who have built the new **everyman** Centre at the Royal Marsden site in Sutton. If you would like to be on a tennis club table please ring Joanne on (020)



8 6 4 2 8 6 7 2 , e m a i l
info@ClubTennis.co.uk or put your name on the notice board. Tickets cost £15 each, please bring your own drinks and glasses.

Finals Day – Saturday 21st July 2001

Please put this in your diary. If you wish to enter any of the events please make sure you will be around for 4 weeks prior to the finals. Events on the day include...

Working Party – 9am please join the party to make the grounds perfect for the finals.

Lunchtime barbecue – 12:30pm the working party will be followed by a barbecue. Please bring along food contributions, meat, salads etc.

The Finals – 2pm sharp. Finals for all events will be played in the afternoon. If you are not playing please come along to watch.

